



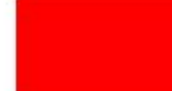







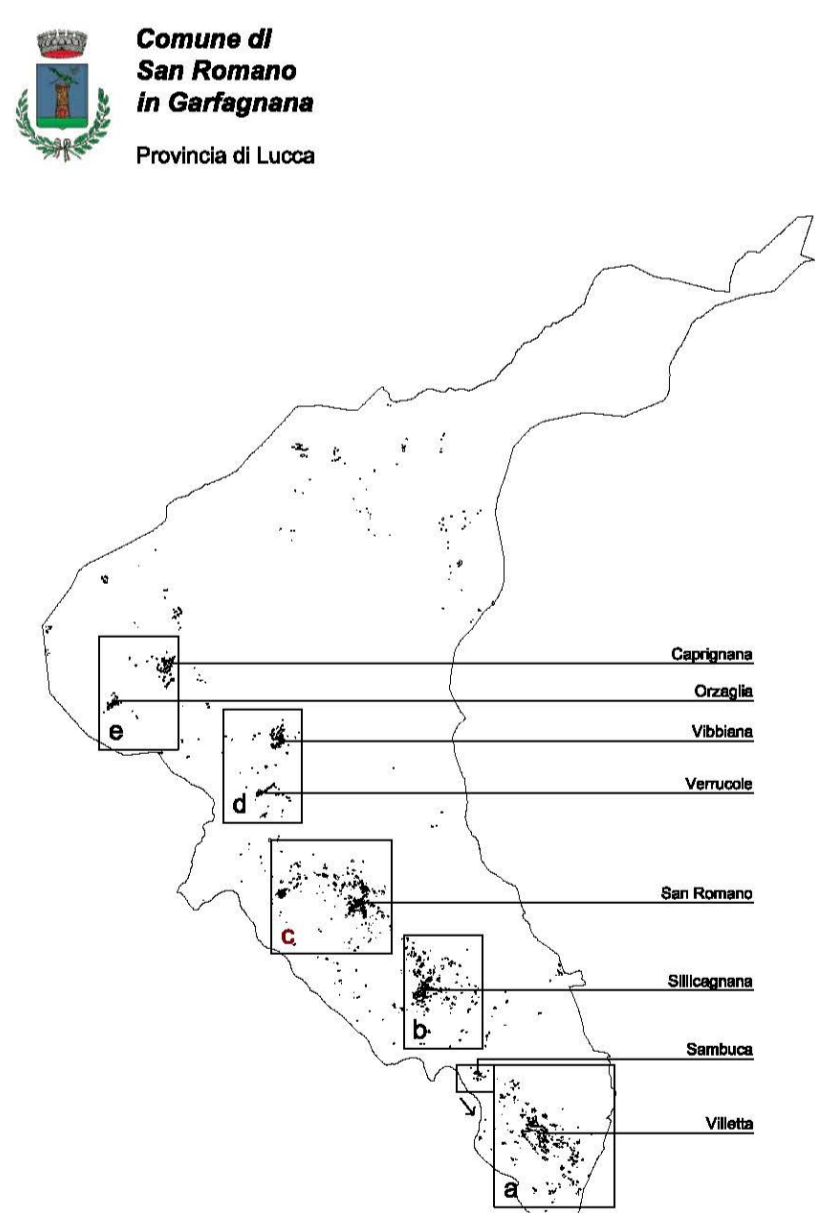
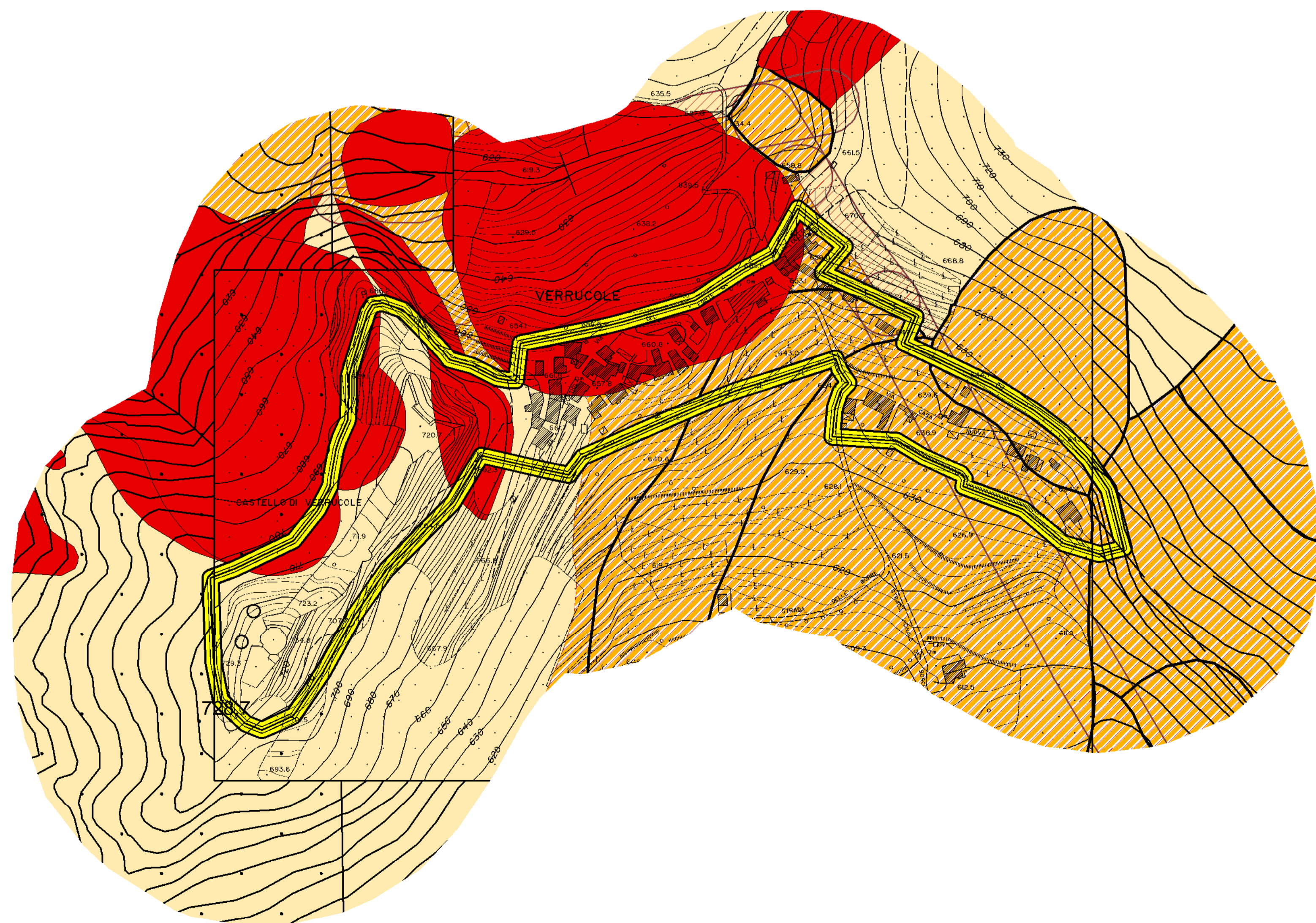
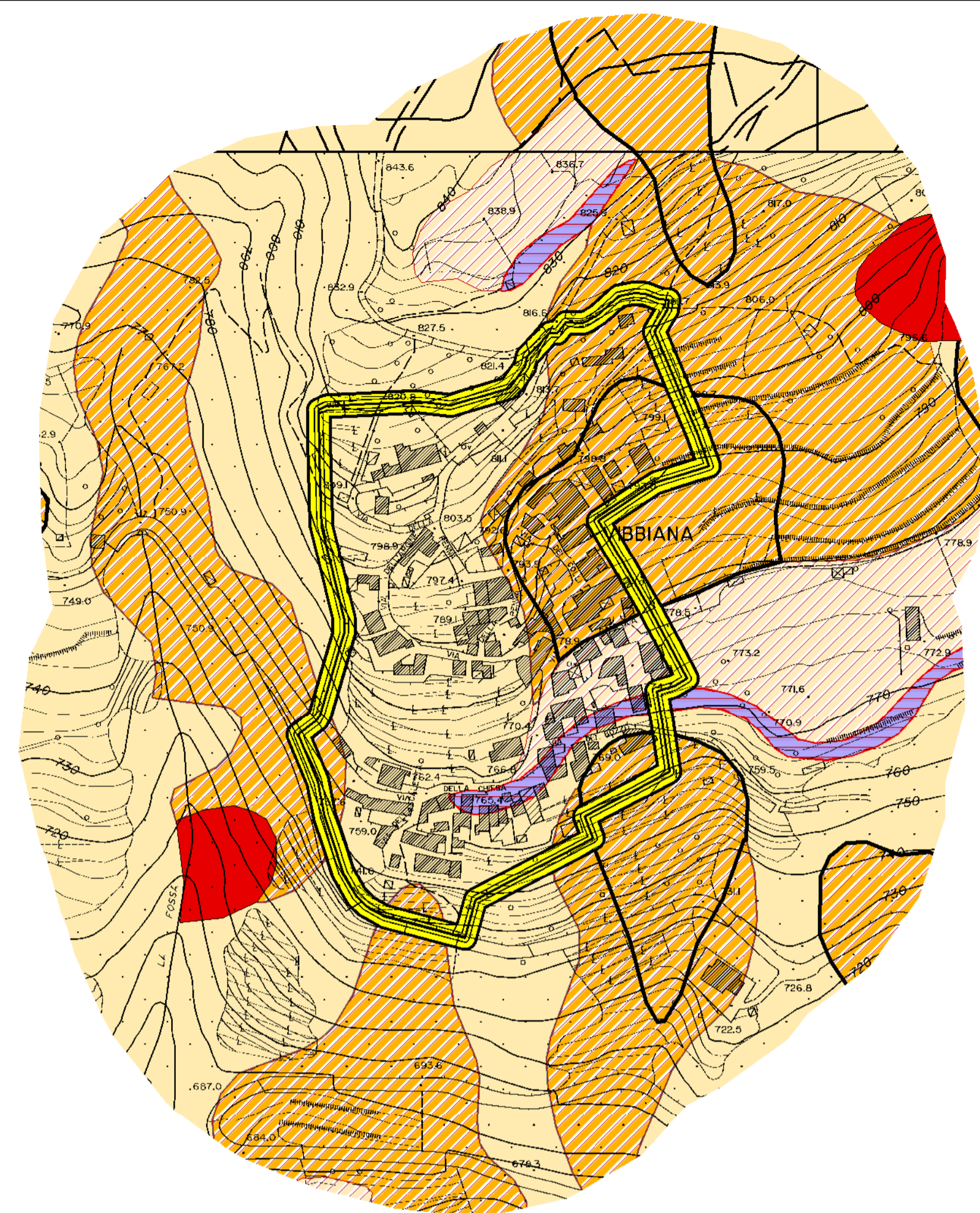


LEGENDA

-  Pericolosità geomorfologica G.2
 -  Pericolosità geomorfologica G.3
 -  Pericolosità geomorfologica G.3
Instabilità potenziale per DGP
 -  Pericolosità geomorfologica G.4
Instabilità potenziale al bordo di terrazzi
 -  Pericolosità geomorfologica G.4
 -  Area in studio a cui si applica la G.3
 -  Area in studio a cui si applica la G.4
"frana di Caprignana"
-
-  Pericolosità sismica S.3
 - e
 -  pericolosità sismica S.3
 - e
 -  pericolosità sismica S.4
 - e
 -  pericolosità sismica S.3
 - e
 -  pericolosità sismica S.4



QG5 (d) - Carta della pericolosità geomorfologica e sismica

Sindaco
Dott. Pier Romano Mariani
Responsabile del procedimento
Geom. Valerio Matti
Garante della Comunicazione
Rag. Milena Coltelli
Consulenza urbanistica generale,
valutazione ambientale strategica e integrata :
Dott. arch. Gilberto Bedini
Dott. arch. Fabrizio Cinquini
Dott. ing. Daniele De Santi
Con la collaborazione di:
Dott. arch. Michela Biagi
Dott. urb. Valeria Dei
Geom. Marco Maler
Studi geologici:
Dott. geol. Mauro Allagosta
San Romano in Garfagnana.

2017 **REGOLAMENTO URBANISTICO**